

CCUA – UNIVERSAL ADJUSTABLE ENCLOSED CABINET



CCUA-2212-64-CD
Clear Door

Construction

- Units are all welded, Constructed of Heavy-Duty extruded 6063 aluminum alloy
- Universal adjustable angle allows the user to change angle spacing as needed to accommodate different trays and product configurations
- Sides allows for 1.5", 3", 4.5" or 6" spacing

Frame

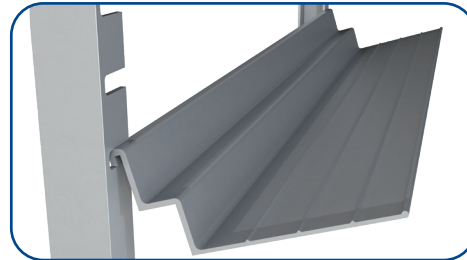
- Uprights are 2.5" x 1" channel
- Door, and base are 1/8" solid aluminum
- Top and rear panel are constructed from .090" solid aluminum
- Cross brace is 1" square aluminum tubing
- Side ledge 1-3/8" x 1/8" wall channels are all welded with slots

Casters

- 5" Poly-U Casters on all units for easy maneuverability

Angles

- Adjustable angles can be moved and configured as needed
- Angles are aluminum and adjustable on 1-1/2" centers
- 5.25" wide stepped angles allow for:
 - 10" x 20" Roast and Bake Pans
 - 20" x 22" Roast & Bake Pans
 - 18" x 26" Roasting Pans
 - 18" x 26" Bun Pans
 - 18" x 13" Pans
 - 12" x 20" Steam Table Pans
 - 20 3/4" x 25 1/2" European Standard Gastro-Norm Pans
 - 15" x 20" Service Tray
 - 14" x 18" Service Tray
 - 20" x 20" Cup & Glass Racks
- Additional runners can be ordered to increase tray capacity



Easily remove and re-position angles

EXAMPLE: CCUA-2212-64-CDBKB (Universal Adj. Cabinet, 12 Pan Cap. [25"W x 26"D x 64" H], with Clear Door, Locking Brakes and Corner Bumpers)

EX. break-down: CCUA		22			12-64			CDBKB	
Universal Adjustable Enclosed Cabinet		Opening		Width	Depth	Pan Capacity	Runner Spacing	Height	Universal Adjustable Enclosed Cabinet Options
CCUA	1.875" Angle	22	22" - Fits: 10" x 20" Roast and Bake Pans 20" x 22" Roast & Bake Pans 18" x 26" Roasting Pans 18" x 26" Bun Pans 18" x 13" Pans 12" x 20" Steam Table Pans 20 3/4" x 25 1/2" European Standard Gastro-Norm Pans 15" x 20" Service Tray 14" x 18" Service Tray 20" x 20" Cup & Glass Racks	28"	28"	13-70 13 Pan Cap. 12-64 12 Pan Cap.* 11-60 11 Pan Cap. 6-36 6 Pan Cap.** 5-29 5 Pan Cap.**	Adjustable Adjustable Adjustable Adjustable Adjustable	70" 64" 60" 36" 29"	CD Clear Poly Carbonate Door HD Heavy Duty Reinforcement, 5" x 2" Heavy Duty Polyurethane Casters 620U 6" x 2" Heavy Duty Poly Urethane Casters COR Tamper proof Correctional Hardware, 6" x 2" Performa-TPR Wheels Upgrade BK Locking Brakes (2) B Corner Bumpers (w/ plate casters or solid base) CB Continuous Bumpers OBL Open Door Lock
						* 64 inch height designed for refrigerator use ** Half size units			Multiple Options may be selected by writing each option code subsequently without dashes or spaces. For example, if you want a Cabinet with locking brakes and corner bumpers, you would write in the box below: BKB

Build Your Universal Adjustable Enclosed Cabinet Part Number

Select a code (in **BLUE**) from each category and fill in the boxes below. Use this Part Number when you order your Universal Adjustable Enclosed Cabinet

	-								
	-								

Choice Equipment Company, Inc. warrants to the original purchaser that all of its goods and services sold shall be free of defect in material or workmanship during the twenty-four (24) months, twelve (12) months on wheels and casters, from the date of shipment or performance, provided the product has been used within the following restrictions:

1. The product was used for its intended purpose.
2. The product was properly handled, stored, installed, maintained and operated.
3. The product was not loaded beyond the product's load capacity.
4. The product is cleaned and maintained with a cleansing agent generally accepted by the industry and the instructions of the specific agent are followed.
5. Any abuse or misuse of, changes to, alteration of, or improper maintenance of original equipment shall void this warranty in its entirety.

If any product provided by Choice Equipment Company, Inc. shows defect in material or workmanship, CEC will, at its option, repair or replace the defective product if (1) CEC has received notice of such defects within the specified warranty period, and (2) upon CEC's request, the defective items is returned at CEC's cost to a location designated by CEC.